



**PODEMCR**

# **Electrical wire rope h**

## **Standard product cata**



Podemcrane/PODEM is the biggest manufacturer of electric hoists in Central and Eastern Europe. In its history the Company has produced over 1800000 units of lifting equipment in 40 countries around the world, which is a record in sales history in the world ever.

Currently we are one of the biggest suppliers of crane components to crane builders and end users around the world.

Our product is a result of 45 years experience in the development and production of hoisting mechanisms. The standard product covers a wide range of hoists up to the capacity of 50t. Many available speeds, trolley types, duty classes and the comprehensive range of additional features guarantee effective, safe and reliable business.

#### **MT hoist offers benefits for new crane or for upgrading and replacement hoists:**

- Highest possible reliability levels offered in the industry (after a comprehensive tests to other leading world manufacturers)
- Operational safety
- Long life
- Easy maintenance
- Low service costs
- Perfect for tougher working conditions
- Outstanding value for money

#### **Standard technical and operational features include:**

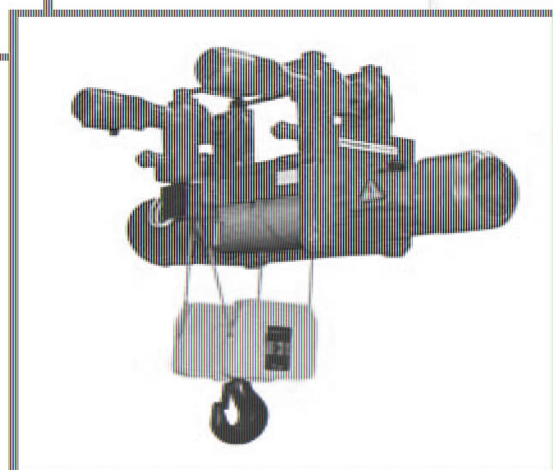
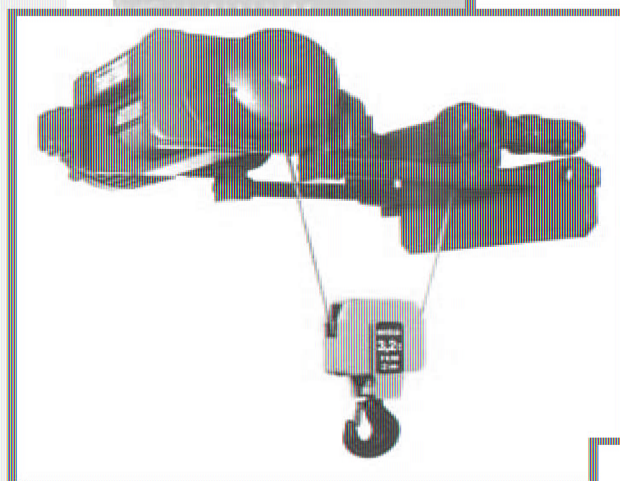
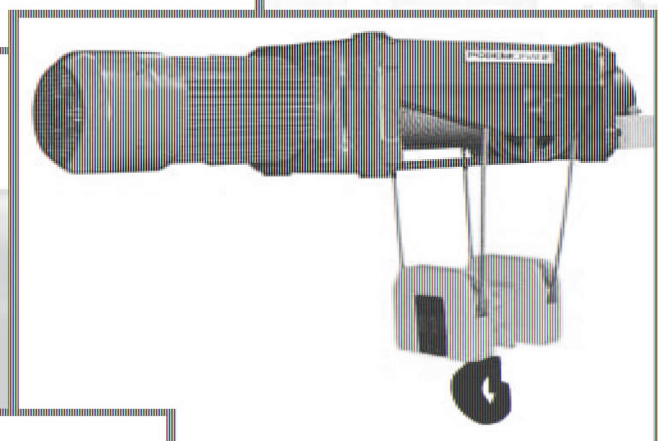
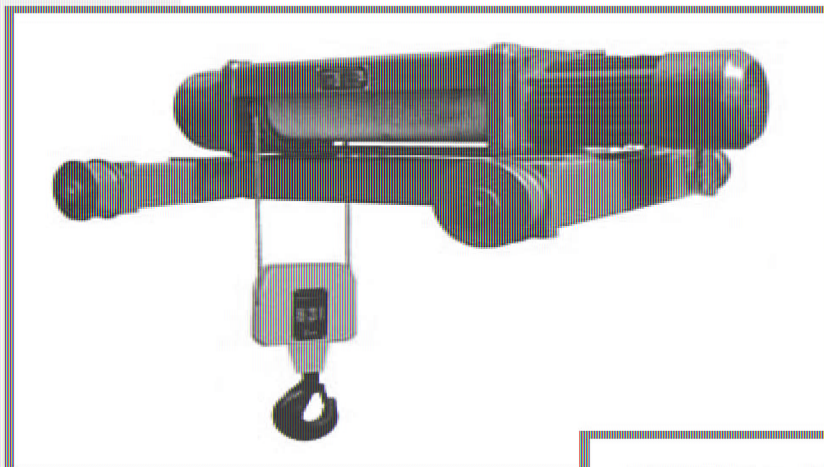
- Planetary reducer
- Double speed for lifting and travel
- Motor thermal protection and ventilation
- Overload limiter
- Lifting limit switch

#### **Other possible technical features:**

- Various power supply
- Ability to operate in various environmental conditions
- Curved monorail trolley
- Radio control
- Frequency controlled speed
- Other custom made solutions for different applications

Our product meet the required International and reliability standards, regulations and comply with the Machine Directive 98/37/EC.

# PODEM CRANE





# STANDARD HOISTS CATALOGUE





## STANDARD ELECTRIC WIRE ROPE HOISTS

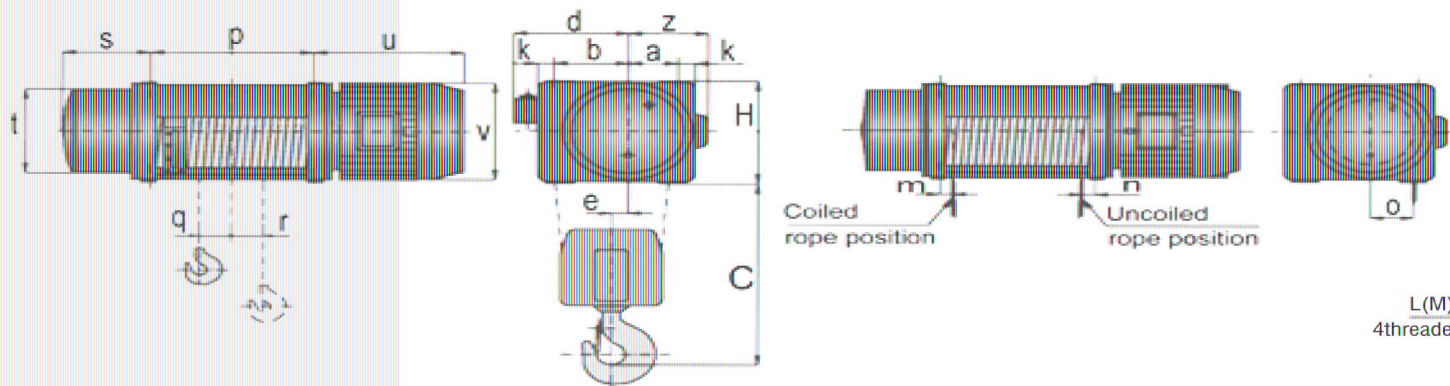
Capacity (Kg)	FEM groups	ISO	Hoist type	Rope falls №	Lifting speed (m/min)		H0	H1
					V1	V2		
800	3m	M6	MT304	2/1	8/2,5	11,2/3,6	10	14
1000	2m	M5	MT305	2/1	8/2,5	11,2/3,6	10	14
1250	3m	M6	MT306	2/1	8/2,5	12/4	10	14
1600	3m	M6	MT304	4/1	4/1,25	5,6/1,8	-	7
	2m	M5	MT308	2/1	8/2,5	12/4	10	14
2000	3m	M6	MT310	2/1	8/2,5	12/4	10	14
	2m	M5	MT305	4/1	4/1,25	5,6/1,8	-	7
2500	3m	M6	MT313	2/1	8/2,5	12/3	10	14
	3m	M6	MT306	4/1	4/1,25	6/2	-	7
	2m	M5	MT312	2/1	8/2,5	12/4	10	14
3200	2m	M5	MT316	2/1	8/2,5	12/3	10	14
	2m	M5	MT308	4/1	4/1,25	6/2	-	7
4000	3m	M6	MT310	4/1	4/1,25	6/2	-	7
	3m	M6	MT520	2/1	8/2	12/3	10	14
5000	3m	M6	MT313	4/1	4/1,25	6/1,5	-	7
	2m	M5	MT312	4/1	4/1,25	6/2	-	7
	2m	M5	MT525	2/1	8/2	-	10	14
	3m	M6	M732	2/1	8/2	10/2,5	14	19
6300	2m	M5	MT316	4/1	4/1,25	6/1,5	-	7
	3m	M6	MT520	4/1	4/1	6/1,5	-	7
8000	2m	M5	M740	2/1	8/2	10/2,5	14	19
10000	2m	M5	MT525	4/1	4/1	-	-	7
	2m	M5	M950	2/1	5/1,25	6/1,5	-	20
16000	3m	M6	M940	4/1	2,5/0,6	3/0,75	-	10
	2m	M5	M740	4/1	4/1	5/1,25	7	9
20000	2m	M5	M950	4/1	2,5/0,6	3/0,75	-	10
	2m	M5	M1100	2/1	2,5/0,6	3/0,75	20	24
25000	1Am	M4	M963	4/1	2,5/0,6	3/0,75	-	10
	1Am	M4	M1125	2/1	2,5/0,6	3/0,75	20	24
32000	3m	M6	M1080	4/1	1,5/0,4	2,4/0,4	10	12
40000	2m	M5	M1100	4/1	1,5/0,4	2,4/0,4	10	12
50000	1Am	M4	M1125	4/1	1,5/0,4	2,4/0,4	10	12

TYPE	Hoist travel speed (m/min), ca	16000kg
Hoist with monorail electric trolley for standard headroom	20/5	19
Hoist with monorail electric trolley for low headroom	20/5	19
Hoist with double rail trolley	20/6	19

***In addition to the standard product list Podemcrane offers advanced engineering for custom made solutions in different industry areas.***

# STANDARD HOISTS CATALOGUE

## foot mounted hoist MT, with 2 rope falls (reeving 2/1)



Hoist type	Capacity, kg	Rope, mm	Fixed dimensions, mm													
1	2	3	C	H	a	b	k	d	e	f	g	h1	h2	i	L	n
MT305	1000	Ø7	500	321	105	190	50	300	53	19	27	13	28	15	14	4
MT308	1600	Ø7	600	321	105	190	50	300	53	19	27	13	28	15	14	4
MT312	2500	Ø10	670	321	105	190	50	300	40	19	27	13	34	17	20	4
MT316	3200	Ø10	670	321	105	190	50	300	40	19	27	13	34	17	20	4
MT525	5000	Ø12	770	378	133	212	53	325	41	21	31	18	48	21	24	6

Hoist type	Hook travel, m	Variable dimensions, mm											Hoist capacity, kg
		p	q	r	s	t	Motors						
							NA		Z		VA		
1	2	3	4	5	6	7	8	9	10	11	12	13	
MT305	10	395	91	61	200	218	375	192	190	376	220	200	1000
	14	520	154	61	200	218	375	192	190	376	220	200	1600
	20	700	244	61	200	218	375	192	190	376	220	200	2500
MT308	10	395	91	61	200	218	376	220	200	483	257	220	3200
	14	520	154	61	200	218	376	220	200	483	257	220	5000
	20	700	244	61	200	218	376	220	200	483	257	220	
MT312	10	440	90	77	246	292	483	257	220	483	257	220	
	14	570	155	77	246	292	483	257	220	483	257	220	
	20	775	258	77	246	292	483	257	220	483	257	220	
MT316	10	440	90	77	246	292	483	257	220	607	310	240	
	14	570	155	77	246	292	483	257	220	607	310	240	
	20	775	258	77	246	292	483	257	220	607	310	240	
MT525	10	455	90	78	266	360	612	310	240	-	-	-	
	14	590	157	78	266	360	612	310	240	-	-	-	
	20	795	260	78	266	360	612	310	240	-	-	-	
	26	995	360	78	266	360	612	310	240	-	-	-	

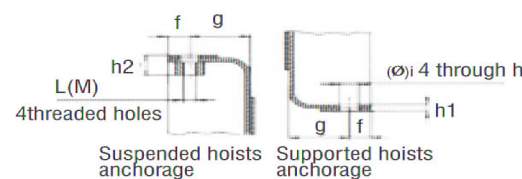
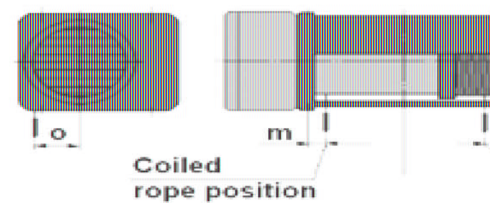
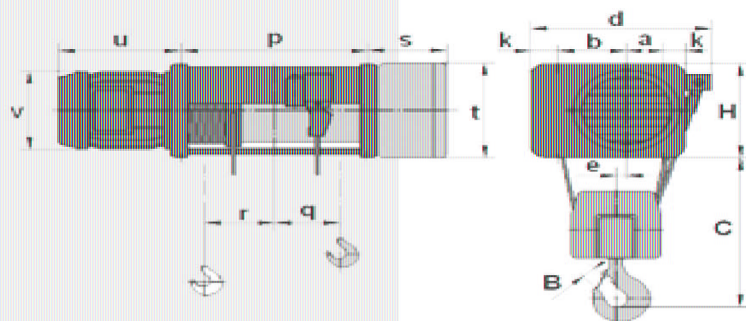
Hoist type	Capacity, kg	Hook position	Hook travel, m													
			10				14				20					
			R1	R2	R3	R4	R1	R2	R3	R4	R1	R2	R3	R4	R1	R2
1	2	3	4	5	6	7	8	9	10	11	12	13	14	15	16	17
MT305	1000	uep	351	404	114	131	378	435	87	100	400	461	65	7		
		dep	169	195	295	341	187	215	277	321	198	228	267	30		
MT308	1600	uep	561	647	182	210	604	697	139	160	640	738	103	1		
		dep	271	312	472	545	299	344	444	513	316	365	427	49		
MT312	2500	uep	916	885	355	344	997	964	274	265	1069	1034	202	19		
		dep	433	419	838	810	475	459	796	770	522	504	749	77		
MT316	3200	uep	1172	1133	455	440	1276	1233	351	340	1369	1323	258	23		
		dep	555	536	1072	1037	608	588	1019	985	668	645	959	99		
MT525	5000	uep	1729	1760	749	762	1899	1932	579	590	2050	2085	429	43		
		dep	814	829	1664	1693	912	927	1567	1594	996	1013	1482	15		

uep – upper end position of the hook; dep – down end position of the hook.



# PODEMCRANE

## foot mounted hoist M, 2 rope falls (reeving 2/1)



Hoist type	Capacity, kg	Rope, mm	Fixed dimensions, mm											
			B	C	H	a	b	k	d	e	f	g	h1	h2
1	2	3	4	5	6	7	8	9	10	11	12	13	14	15
M740	8000	Ø15	56	850	530	167,5	307,5	80,5	470	64	23,5	44,5	12	47
M950	10000	Ø20	71	1030	624	200	340	92	515	66,5	28,5	59,5	24	66
M1125	25000	Ø30	90	1325	804	232.5	452.5	137.5	705	89	40	80	19	58

Hoist type	Hook travel, m	Variable dimensions, mm								
		p	q	r	s	t	Motors			
							NA		VA	
1	2	3	4	5	6	7	u	v	u	v
M740	14	553	148	78	299	400	502	440	508	440
	19	713	178	128						
	26	928	285	128						
M950	20	840	228	118	314	400	513	440	519	440
	32	1255	435	118						
	M1125	20	977	305						
24		1162	400	100						
30		1402	520	100						

Hoist capacity, kg
8000
10000
25000

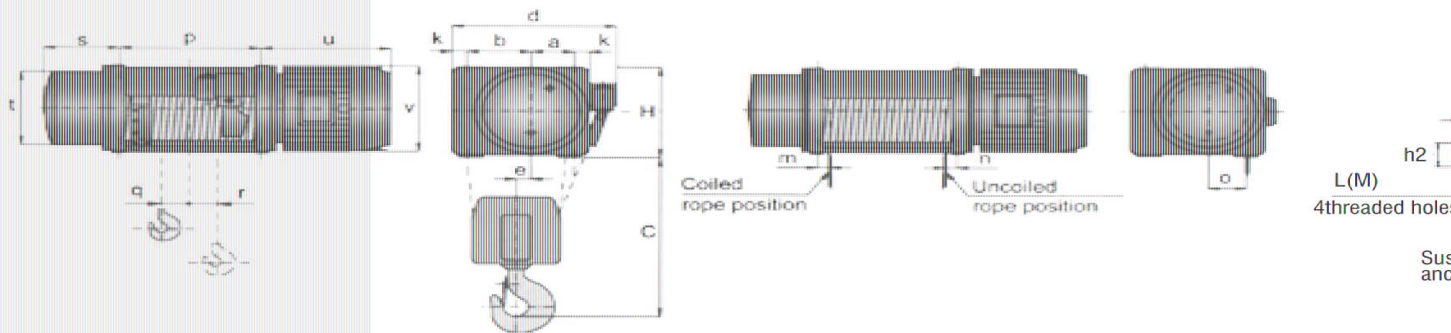
Hoist type	Capacity, kg	Hook travel, m	Hook position	Reactions, kg			
				R1	R2	R3	R4
1	2	3	4	5	6	7	8
M740	8000	14	uep	2993	3148	906	953
			dep	1400	1472	2499	2629
		19	uep	2923	3074	976	1027
			dep	1250	1314	2649	2787
		26	uep	3147	3310	752	791
			dep	1412	1485	2487	2616
M950	10000	20	uep	3807	3907	1128	1158
			dep	1774	1821	3161	3244
		32	uep	4178	4288	757	777
			dep	2004	2056	2931	3009
M1125	25000	20	uep	9530	10775	2204	2491
			dep	4606	5207	7128	8059
		24	uep	9906	11200	1828	2066
			dep	4857	5492	6876	7775
		30	uep	10219	11553	1515	1713
			dep	5030	5687	6704	7579

uep – upper end position of the hook; dep – down end position. of the hook



# STANDARD HOISTS CATALOGUE

## foot mounted hoist MT, 4 rope falls (reeving 4/1)



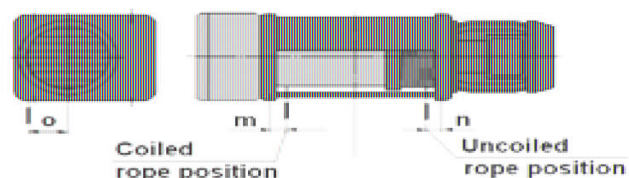
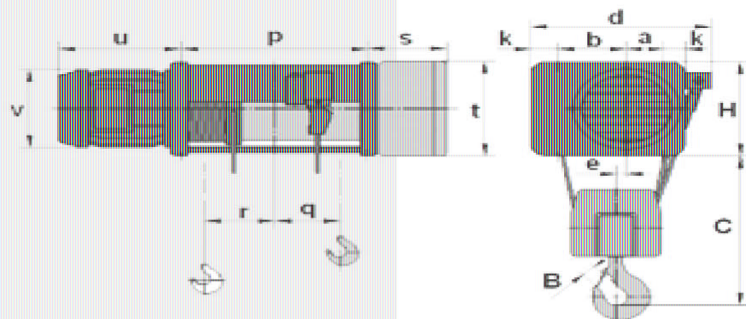
Hoist type	Capacity, kg	Rope, mm	Fixed dimensions, mm									
			C	H	a	b	k	d	e	f	g	h1
1	2	3	4	5	6	7	8	9	10	11	12	13
MT305	2000	Ø7	505	321	105	190	50	469	27	19	27	13
MT308	3200	Ø 7	550	321	105	190	50	469	27	19	27	13
MT312	5000	Ø 10	615	321	105	190	50	469	21	19	27	13
MT316	6300	Ø 10	635	321	105	190	50	469	21	19	27	13
MT525	10000	Ø 12	670	378	133	212	53	544	17	21	31	18

Hoist type	Hook travel, m	Variable dimensions, mm								
		p	q	r	s	t	Motors			
							NA		VA	
1	2	3	4	5	6	7	u	v	u	v
MT305	7	520	132	-25	200	218	357	192	376	220
	10	700	222	-69	200	218	357	192	376	220
	13	885	314	-115	200	218	357	192	376	220
MT308	7	520	132	-25	200	218	376	220	483	257
	10	700	222	-69	200	218	376	220	483	257
	13	885	314	-115	200	218	376	220	483	257
MT312	7	570	137	-19	246	292	483	257	483	257
	10	775	240	-72	246	292	483	257	483	257
	13	975	340	-122	246	292	483	257	483	257
MT316	7	570	137	-19	246	292	483	257	483	257
	10	775	240	-72	246	292	483	257	483	257
	13	975	340	-122	246	292	483	257	483	257
MT525	7	590	133	-15	266	360	612	310	-	-
	10	795	236	-67	266	360	612	310	-	-
	13	995	336	-117	266	360	612	310	-	-

Hoist type	Capacity, kg	Hook position	Hook travel, m							
			7				10			
			R1	R2	R3	R4	R1	R2	R3	R4
1	2	3	4	5	6	7	8	9	10	11
MT305	2000	uep	838	669	274	219	908	726	203	163
		dep	609	487	503	401	666	531	446	357
MT308	3200	uep	1341	1071	438	350	1454	1161	325	260
		dep	975	779	804	642	1065	850	714	571
MT312	5000	uep	2058	1644	722	576	2249	1796	531	424
		dep	1483	1184	1297	1036	1645	1315	1134	906
MT316	6300	uep	2592	2071	910	727	2834	2263	669	534
		dep	1868	1492	1634	1306	2074	1657	1428	1141
MT525	10000	uep	4100	3154	1552	1194	4504	3465	1148	883
		dep	2970	2284	2683	2063	3303	2540	2350	1807

uep – upper end position of the hook; dep – down end position of the hook.

## foot mounted hoist M, 4 rope falls (reeving 4/1)



L(M)  
4thread

Hoist type	Capacity, kg	Rope, mm	Fixed dimensions, mm											
			B	C	H	a	b	k	d	e	f	g	h1	h2
1	2	3	4	5	6	7	8	9	10	11	12	13	14	15
M740	16000	Ø15	71	826	530	167,5	307,5	80,5	768	29,5	23,5	44,5	12	47
M963	25000	Ø20	90	920	624	200	340	92	856	20	28,5	59,5	24	66
M1125	50000	Ø30	112	1170	804	232,5	452,5	137,5	1135	54	40	80	19	58

Hoist type	Hook travel, m	Variable dimensions, mm								
		p	q	r	s	t	Motors			
							NA		VA	
1	2	3	4	5	6	7	8	9	10	11
M740	7	553	37	76	299	400	502	440	508	440
	9	713	117	36						
	13	928	225	-18						
	16	1143	332	-72						
M963	10	840	130	43	314	400	513	440	519	440
	16	1255	337	61						
	24	1755	587	-186						
M1125	10	977	193	12	415	400	579	440	587	440
	12	1162	285	-35						
	15	1402	405	-95						
	22	1912	660	-222						

Hoist capacity, kg
16000
25000
50000

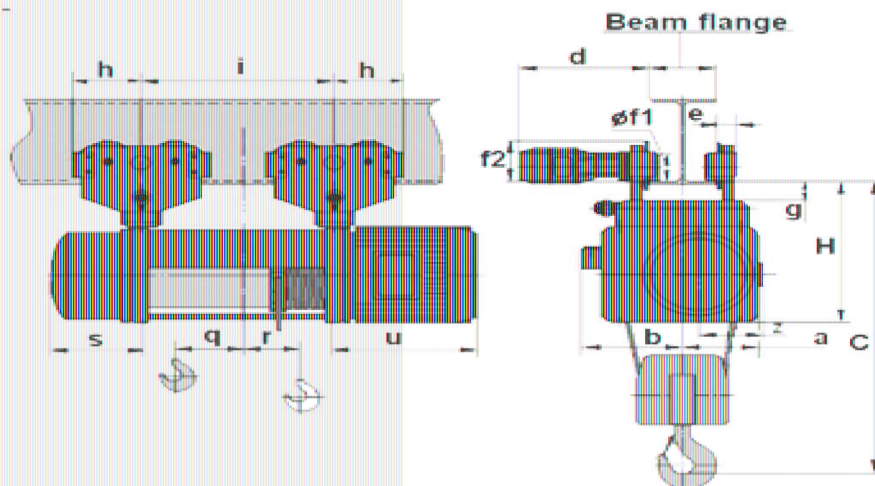
Hoist type	Capacity, kg	Hook travel, m	Hook position	Reactions, kg			
				R1	R2	R3	R4
1	2	3	4	5	6	7	8
M740	16000	7	uep	5309	3762	4055	2874
			dep	3395	2406	5969	4230
		9	uep	6218	4407	3146	2229
			dep	4209	2983	5155	3653
		13	uep	6948	4923	2417	1712
			dep	4864	3446	4501	3189
M963	25000	16	uep	7402	5245	1962	1391
			dep	5272	3736	4092	2900
		10	uep	9700	6669	5115	3516
			dep	6658	4577	8157	5608
		16	uep	11385	7826	3429	2360
			dep	6687	4598	8127	5588
M1125	50000	24	uep	12363	8499	2452	1686
			dep	8978	6172	5837	4013
		10	uep	20290	14587	8798	6325
			dep	14187	10199	14901	10713
		12	uep	21678	15585	7410	5327
			dep	15420	11086	13668	9826
		15	uep	22947	16497	6141	4415
			dep	16515	11873	12573	9039
		22	uep	24584	17675	4503	3238
			dep	17921	12884	11167	8028

uep – upper end position of the hook; dep – down end position of the hook.



# STANDARD HOISTS CATALOGUE

## normal headroom hoist MT; 2 rope falls (reeving 2/1)



Hoist type	Capacity, kg	Rope, mm	Fixed dimensions, mm									
			C	H	a	b	d	e	f1	f2	g	h
1	2	3	4	5	6	7	8	9	10	11	12	13
MT305	1000	Ø7	996	496	208	247	380	53	120	142	30	190
MT308	1600	Ø7	1096	496	208	247	380	53	120	142	30	190
MT312	2500	Ø10	1166	496	195	260	380	53	120	142	30	190
MT316	3200	Ø10	1166	496	195	260	380	53	120	142	30	190
MT525	5000	Ø12	1356	586	227	284	415	53	120	164	30	215

Hoist type	Hook travel, m	Variable dimensions, mm							
		i	q	r	s	Motors			
						NA		VA	
1	2	3	4	5	6	u	z	u	z
MT305	10	395	91	61	200	357	190	376	200
	14	520	154	61	200	357	190	376	200
	20	700	244	61	200	357	190	376	200
	26	875	335	61	200	357	190	376	200
MT308	10	395	91	61	200	376	200	483	220
	14	520	154	61	200	376	200	483	220
	20	700	244	61	200	376	200	483	220
	26	875	335	61	200	376	200	483	220
MT312	10	440	90	77	246	483	220	483	220
	14	570	155	77	246	483	220	483	220
	20	775	258	77	246	483	220	483	220
	26	950	349	77	246	483	220	483	220
MT316	10	440	90	77	246	483	220	607	240
	14	570	155	77	246	483	220	607	240
	20	775	258	77	246	483	220	607	240
	26	950	349	77	246	483	220	607	240
MT525	10	455	90	78	266	612	240	-	-
	14	590	157	78	266	612	240	-	-
	20	795	260	78	266	612	240	-	-
	26	995	360	78	266	612	240	-	-

Hoist capacity, kg	Weight, kg	
	10	20
1000	275	280
1600	280	285
2500	340	345
3200	370	375
5000	510	515

Hoist type	Capacity, kg	Hook position	Hook travel, m							
			10		14		20		26	
			R1	R2	R1	R2	R1	R2	R1	R2
1	2	3	4	5	6	7	8	9	10	11
MT305	1000	uep	722	278	786	214	842	158	-	-
		dep	336	664	378	622	406	594	-	-
MT308	1600	uep	1154	446	1258	342	1346	254	-	-
		dep	536	1064	604	996	650	950	-	-
MT312	2500	uep	1812	688	1970	530	2110	390	-	-
		dep	864	1636	944	1556	1034	1466	-	-
MT316	3200	uep	2320	880	2520	680	2700	500	-	-
		dep	1106	2094	1208	1992	1324	1876	-	-
MT525	5000	uep	3428	1572	3788	1212	4100	900	4298	702
		dep	1588	3412	1796	3204	1990	3010	2088	2912

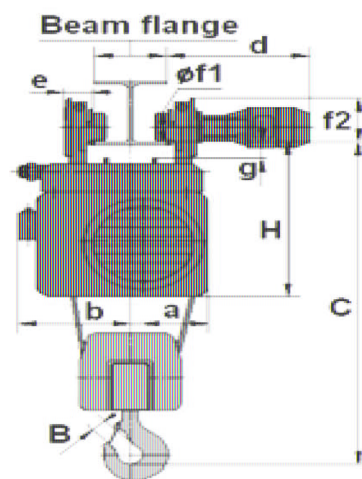
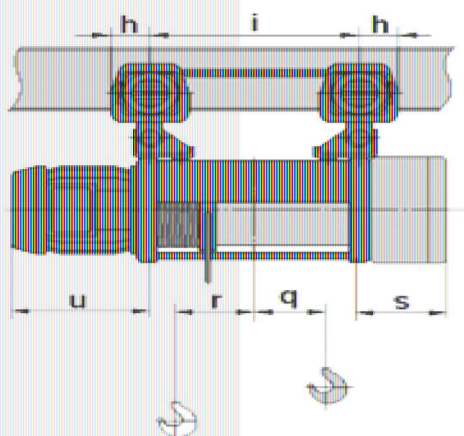
uep – upper end position of the hook; dep – down end position of the hook.

**Note: load on the single wheel : R1/4, R2/4**



# PODEMCRANE

## normal headroom hoist M, 2 rope falls (reeving 2/1)



Hoist type	Capacity, kg	Rope, mm	Fixed dimensions, mm									
			B	C	H	a	b	d	e	f1	f2	g
1	2	3	4	5	6	7	8	9	10	11	12	13
M740	8000	Ø15	56	1635	745	308	410	515	100	200	225	46

Hoist type	Hook travel, m	Variable dimensions, mm					
		i	q	r	s	Motors	
						NA	VA
1	2	3	4	5	6	7	8
M740	14	553	148	78	299	502	508
	19	713	178	128			
	26	928	285	128			

Wheel diameter, mm	x	y
200	22	45

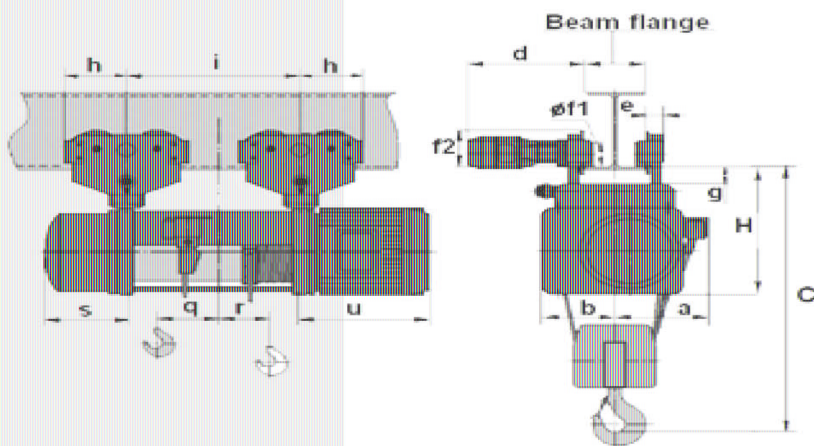
Hoist type	Capacity, kg	Hook travel, m	Hook position	Reactions, kg	
				R1	R2
1	2	3	4	5	6
M740	8000	14	uep	930	3070
			dep	2564	1436
		19	uep	1002	2998
			dep	2718	1282
		26	uep	772	3228
			dep	2551	1449

Hoist capacity, kg	Weight, kg	
	14	19
8000	975	1143

uep – upper end position of the hook; dep – down end position of the hook.

# STANDARD HOISTS CATALOGUE

## normal headroom hoist MT, 4 rope falls (reeving 4/1)



Hoist type	Capacity, kg	Rope, mm	Fixed dimensions, mm									
			C	H	a	b	d	e	f1	f2	g	h
1	2	3	4	5	6	7	8	9	10	11	12	13
MT305	2000	Ø7	1001	496	256	213	380	53	120	142	30	190
MT308	3200	Ø7	1046	496	256	213	380	53	120	142	30	190
MT312	5000	Ø10	1111	469	335	134	380	53	120	142	30	190
MT316	6300	Ø10	1131	496	335	134	380	53	120	142	30	190
MT525	10000	Ø12	1256	586	296	248	415	63	140	164	30	215

Hoist type	Hook travel, m	Variable dimensions, mm					
		i	q	r	s	Motors	
						NA	VA
1	2	3	4	5	6	7	8
MT305	7	520	132	-25	200	357	376
	10	700	222	-69	200	375	376
	13	885	314	-115	200	375	376
MT308	7	520	132	-25	200	376	483
	10	700	222	-69	200	376	483
	13	885	314	-115	200	376	483
MT312	7	570	137	-19	246	483	483
	10	775	240	-72	246	483	483
	13	975	340	-122	246	483	483
MT316	7	570	137	-19	246	483	483
	10	775	240	-72	246	483	483
	13	975	340	-122	246	483	483
MT525	7	590	133	-15	266	612	-
	10	795	236	-67	266	612	-
	13	995	336	-117	266	612	-

Hoist capacity, kg	Weight, kg	
	Hook travel, m	Hook travel, m
	7	10
2000	290	308
3200	310	330
5000	395	425
6300	443	471
10000	525	560

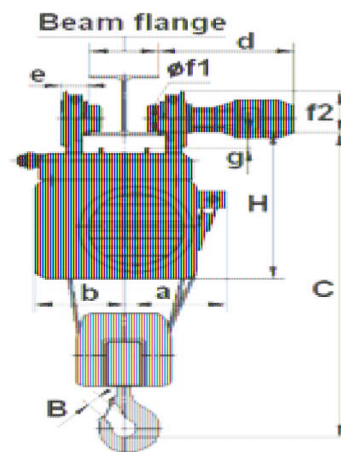
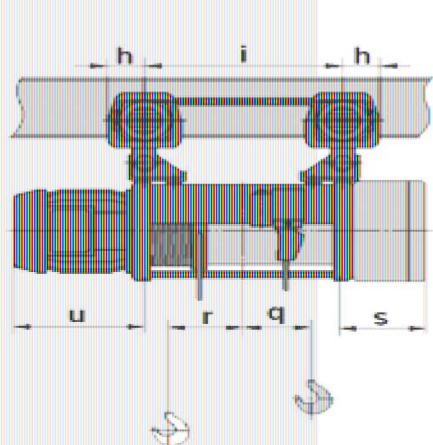
Hoist type	Capacity, kg	Hook position	Hook travel, m					
			7		10		13	
			R1	R2	R1	R2	R1	R2
1	2	3	4	5	6	7	8	
MT305	2000	uep	1508	492	1634	366	1710	
		dep	1096	904	1196	804	1258	
MT308	3200	uep	2412	788	2614	586	2736	
		dep	1754	1446	1914	1286	2014	
MT312	5000	uep	3702	1298	4044	956	4240	
		dep	2666	2334	2960	2040	3126	
MT316	6300	uep	4664	1636	5096	1204	5344	
		dep	3360	2940	3730	2570	3938	
MT525	10000	uep	7254	2746	7968	2032	8376	
		dep	5254	4746	5842	4158	6176	

uep – upper end position of the hook; dep – down end position of the hook

**Note: load on the single wheel : R1/4, R2/4**

# PODEMICRANE

## normal headroom hoist M, 4 rope falls (reeving 4/1)



Hoist type	Capacity, kg	Rope, mm	Fixed dimensions, mm									
			B	C	H	a	b	d	e	f1	f2	g
1	2	3	4	5	6	7	8	9	10	11	12	13
M740	16000	Ø15	71	1600	771	410	358	550	122	250	282	50

Hoist type	Hook travel, m	Variable dimensions, mm					
		i	q	r	s	Motors	
						NA	VA
1	2	3	4	5	6	7	8
M740	7	553	37	70	299	502	508
	9	713	117	36			
	13	928	224	-18			
	16	1143	332	-72			

Wheel diameter, mm	x
250	22

Hoist type	Capacity, kg	Hook travel, m	Hook position	Reactions, kg	
				R1	R2
1	2	3	4	5	6
M740	16000	7	uep	3465	4535
			dep	5012	2988
		9	uep	2687	5313
			dep	4404	3596
		13	uep	2069	5931
			dep	3845	4155
		16	uep	1677	6323
			dep	3496	4504

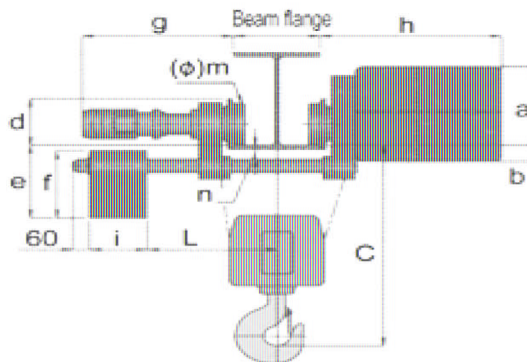
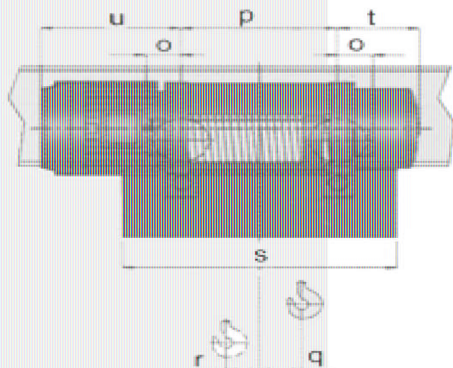
Hoist capacity, kg	Weight
	7
16000	990

uep – upper end position of the hook; dep – down end position of the hook.



# STANDARD HOISTS CATALOGUE

## low headroom hoist MT, 2 rope falls (reeving 2/1)



Hoist type	Capacity, kg	Rope, mm	Fixed dimensions, mm											
			C	a	b	d	e	f	g	h	i	L	m	n
1	2	3	4	5	6	7	8	9	10	11	12	13	14	15
MT305	1000	Ø7	649	265	45	114	340	310	420	455	12	550...465	97,5	61
MT308	1600	Ø7	749	265	45	114	340	310	420	455	12	550...465	97,5	61
MT312	2500	Ø10	819	240	69	140	369	310	426	468	12	624...539	122	82
MT316	3200	Ø10	819	240	69	140	369	310	426	468	12	624...539	122	82
MT525	5000	Ø12	924	283	71	146	359	310	483	524	40	631...546	122	77

Hoist type	Hook travel, m	Variable dimensions, mm							Motors	
		p	q	r	s	t	u	v	NA	VA
									u	v
1	2	3	4	5	6	7	8	9		
MT305	10	395	88	65	700	200	357	376		
	14	520	149	65	700	200	357	376		
	20	700	239	65	800	200	357	376		
MT308	10	395	88	65	700	200	376	483		
	14	520	149	65	700	200	376	483		
	20	700	239	65	800	200	376	483		
MT312	10	440	99,5	68	700	246	483	483		
	14	570	164,5	68	700	246	483	483		
	20	775	267	68	900	246	483	483		
MT316	10	440	99,5	68	700	246	483	607		
	14	570	164,5	68	700	246	483	607		
	20	775	267	68	900	246	483	607		
MT525	10	455	85	82	700	266	612	-		
	14	590	152,5	82	700	266	612	-		
	20	795	255	82	900	266	612	-		
	26	995	355	82	1100	266	612	-		

Wheel diameter, mm
97,5
122

Hoist capacity, kg
1000
1600
2500
3200
5000

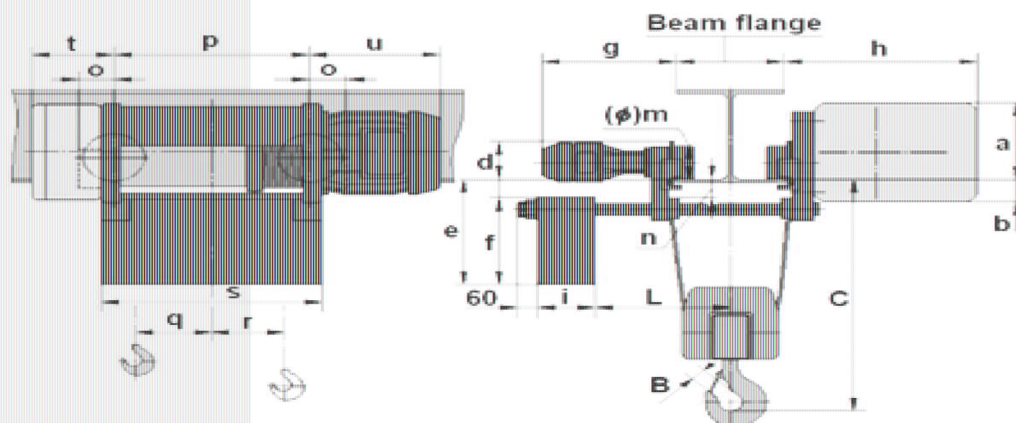
Hoist type	Capacity, kg	Hook position	Hook travel, m							
			10		14		20		26	
			R1	R2	R1	R2	R1	R2	R1	R2
1	2	3	4	5	6	7	8	9	10	11
MT305	1000	uep	361	139	393	107	421	79	-	-
		dep	168	332	189	311	203	297	-	-
MT308	1600	uep	577	223	629	171	673	127	-	-
		dep	268	532	302	498	325	475	-	-
MT312	2500	uep	906	344	985	265	1055	195	-	-
		dep	432	818	472	778	517	733	-	-
MT316	3200	uep	1160	440	1260	340	1350	250	-	-
		dep	553	1047	604	996	662	938	-	-
MT525	5000	uep	1714	786	1894	606	2050	450	2141	359
		dep	794	1706	898	1602	995	1505	1044	1456

uep – upper end position of the hook; dep – down end position of the hook.

\*For wider beam flanges, as specified, the measure "C" (space required by the hook) increases of 12 mm with every 10 mm beam flange width.

# PODEMCRANE

## low headroom hoist M, 2 rope falls (reeving 2/1)



Hoist type	Capacity, kg	Rope, mm	Fixed dimensions, mm											
			B	C	a	b	d	e	f	g	h	i	L	m
1	2	3	4	5	6	7	8	9	10	11	12	13	14	15
M740	8000	Ø15	56	925	454,5	75,5	218	395	365	430	762	230	650...565	200

Hoist type	Hook travel, m	Variable dimensions, mm							Motors	
		p	q	r	s	t	u	u	NA	VA
									8	9
1	2	3	4	5	6	7	8	9		
M740	14	553	130	83	673	299	502	508		
	19	713	160	133	833					
	26	928	268	133	1048					

Hoist type	Capacity, kg	Hook travel, m	Hook position	Reactions, kg	
				R1	R2
1	2	3	4	5	6
M740	8000	14	uep	1060	2940
			dep	2600	1400
		19	uep	1103	2897
			dep	2746	1254
		26	uep	845	3155
			dep	2573	1427

Hoist capacity, kg
8000

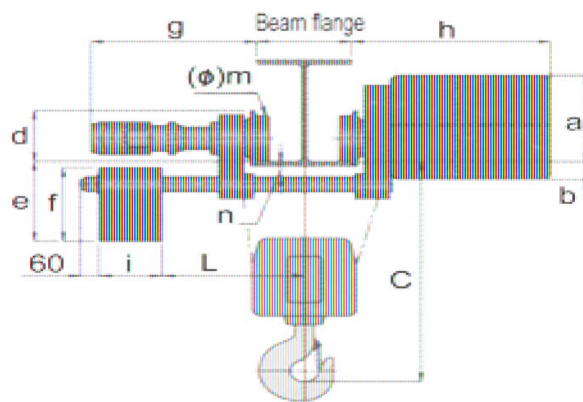
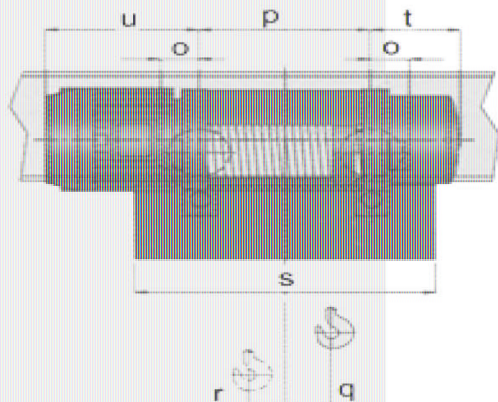
uep – upper end position of the hook; dep – down end position of the hook

\*For wider beam flanges, as specified, the measure "C" (space required by the hook) increases of 12 mm with every 10 mm beam flange width.



# STANDARD HOISTS CATALOGUE

## low headroom hoist MT, 4 rope falls (reeving 4/1)



Hoist type	Capacity, kg	Rope, mm	Fixed dimensions, mm											
			C	a	b	d	e	f	g	h	i	L	m	n
1	2	3	4	5	6	7	8	9	10	11	12	13	14	15
MT305	2000	Ø7	654	240	69	140	369	310	417	472	12	624...539	122	82
MT308	3200	Ø7	699	240	69	140	369	310	417	472	12	624...539	122	82
MT312	5000	Ø10	769	240	69	140	359	310	473	472	40	631...546	122	77
MT316	6300	Ø10	773	262	47	174	343	310	526	481	40	621...536	155	60
MT525	10000	Ø12	813	304	50	174	333	310	536	547	200	556...481	155	58

Hoist type	Hook travel, m	Variable dimensions, mm						
		p	q	r	s	t	Motors	
							NA	VA
1	2	3	4	5	6	7	8	9
MT305	7	520	64	43	700	200	357	376
	10	700	154	-2	800	200	357	376
	13	885	247	-47	1000	200	357	376
MT308	7	520	64	43	700	200	376	483
	10	700	154	-2	800	200	376	483
	13	885	247	-47	1000	200	376	483
MT312	7	570	24	94	700	246	483	483
	10	775	127	41	900	246	483	483
	13	975	227	-9	1100	246	483	483
MT316	7	570	24	94	700	246	483	607
	10	775	127	41	900	246	483	607
	13	975	227	-9	1100	246	483	607
MT525	7	590	60	58	700	266	612	-
	10	795	163	6	900	266	612	-
	13	995	263	-43	1100	266	612	-

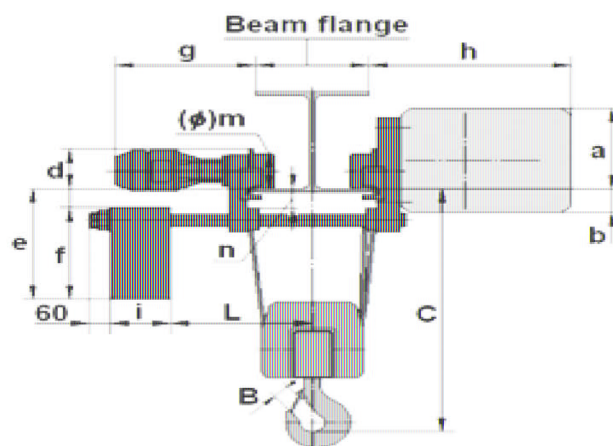
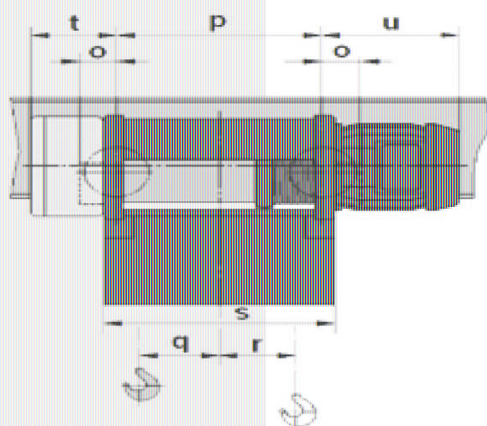
Hoist type	Capacity, kg	Hook position	Hook travel, m					
			7		10		13	
			R1	R2	R1	R2	R1	R2
1	2	3	4	5	8	9	10	11
MT305	2000	uep	622	378	720	280	778	222
		dep	583	417	502	498	553	447
MT308	3200	uep	997	603	1152	448	1246	354
		dep	933	667	804	796	885	715
MT312	5000	uep	1356	1144	1658	842	1831	669
		dep	838	1662	1118	1382	1273	1227
MT316	6300	uep	1708	1442	2089	1061	2307	843
		dep	1056	2094	1409	1741	1604	1546
MT525	10000	uep	3009	1991	3522	1478	3819	1181
		dep	2009	2991	2463	2537	2716	2284

uep – upper end position of the hook; dep – down end position of the hook

\*For wider beam flanges, as specified, the measure "C" (space required by the hook) increases of 12 mm with every 10 mm beam flange width.



## low headroom hoist M, 4 rope falls (reeving 4/1)



Hoist type	Capacity, kg	Rope, mm	Fixed dimensions, mm											
			B	C	a	b	d	e	f	g	h	i	L	m
1	2	3	4	5	6	7	8	9	10	11	12	13	14	15
M740	16000	Ø15	71	910	454,5	75,5	273	395	365	522	772	230	640...555	250

Hoist type	Hook travel, m	Variable dimensions, mm							Motors	
		p	q	r	s	t			NA	VA
									u	u
1	2	3	4	5	6	7			8	9
M740	7	553	21	88	673					
	9	713	65	75	833					
	13	928	156	45	1048	299			502	508
	16	1143	264	-17	1263					

Hoist type	Capacity, kg	Hook travel, m	Hook position	Reactions, kg	
				R1	R2
1	2	3	4	5	6
M740	16000	7	uep	3704	4296
			dep	5266	2734
		9	uep	3277	4723
			dep	4836	3164
		13	uep	2655	5345
			dep	4151	3849
		16	uep	2156	5844
			dep	3883	4117

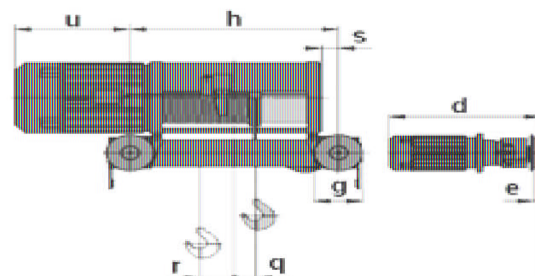
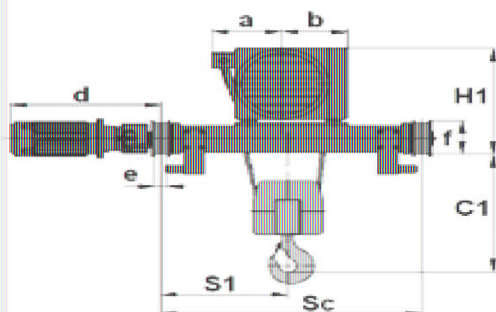
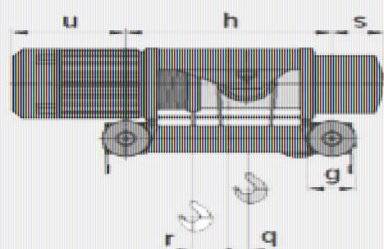
uep – upper end position of the hook; dep – down end position of the hook

\*For wider beam flanges, as specified, the measure "C" (space required by the hook) increases of 12 mm with every 10 mm beam

Hoist capacity, kg
16000

# STANDARD HOISTS CATALOGUE

## double girder trolley, 4 rope falls (reeving 4/1)



Hoist type	Capacity, kg	Fixed dimensions, mm													
		C1	Sc	S1	H1	a	b	d*	e	e1	e2	f	g	g1	sp
1	2	3	4	5	6	7	8	9	10	11	12	13	14	15	16
MT305	2000	505	1000	484	476	229	240	465	50	75	40	173	160	185	30
MT308	3200	550	1000	484	476	229	240	465	50	75	40	173	160	185	30
MT312	5000	615	1000	478	476	229	240	500	50	75	40	173	160	185	30
MT316	6300	635	1000	478	476	229	240	500	50	75	40	173	160	185	30
MT525	10000	670	1000	477	543	279	265	575	50	75	40	173	160	185	30
M740	16000	826	1200	640	735	410	358	610	60	90	50	220	200	240	40

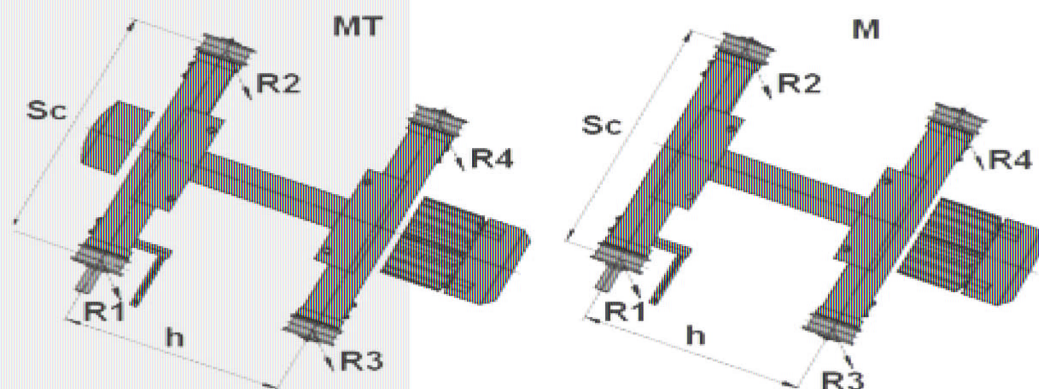
d\* - for travel speed 20/6 m/min.

Hoist type	Hook travel, m	Weight, kg		Variable dimensions, mm						Motors	
		Motors		h	q	r	s	u	10	NA	VA
		NA	VA								
1	2	3	4	5	6	7	8	9	10		
MT3051	7	374	378	720	132	-25	99,5	257	276		
MT3052	10	394	398	900	222	-69	99,5	257	276		
MT3053	13	422	426	1085	314	-115	99,5	257	276		
MT3081	7	378	416	720	132	-25	99,5	276	383		
MT3082	10	398	436	900	222	-69	99,5	276	383		
MT3083	13	426	464	1085	314	-115	99,5	276	383		
MT3121	7	512	519	770	137	-19	146	383	383		
MT3122	10	544	550	975	239,5	-71,5	146	383	383		
MT3123	13	576	583	1175	339,5	-122	146	383	383		
MT3161	7	524	549	770	137	-19	146	383	507		
MT3162	10	556	581	975	239,5	-71,5	146	383	507		
MT3163	13	588	613	1175	339,5	-122	146	383	507		
MT5251	7	670	-	790	133	-15	166	512	-		
MT5252	10	710	-	995	236	-67	166	512	-		
MT5253	13	750	-	1195	336	-117	166	512	-		
M7401	7	1343	1418	833	64	45	91,5	594	392		
M7402	9	1390	1465	993	117	36	91,5	594	392		
M7403	13	1555	1630	1208	224	-18	91,5	594	392		

suspended version / solution possible



## double girder trolley, 4 rope falls (reeving 4/1)

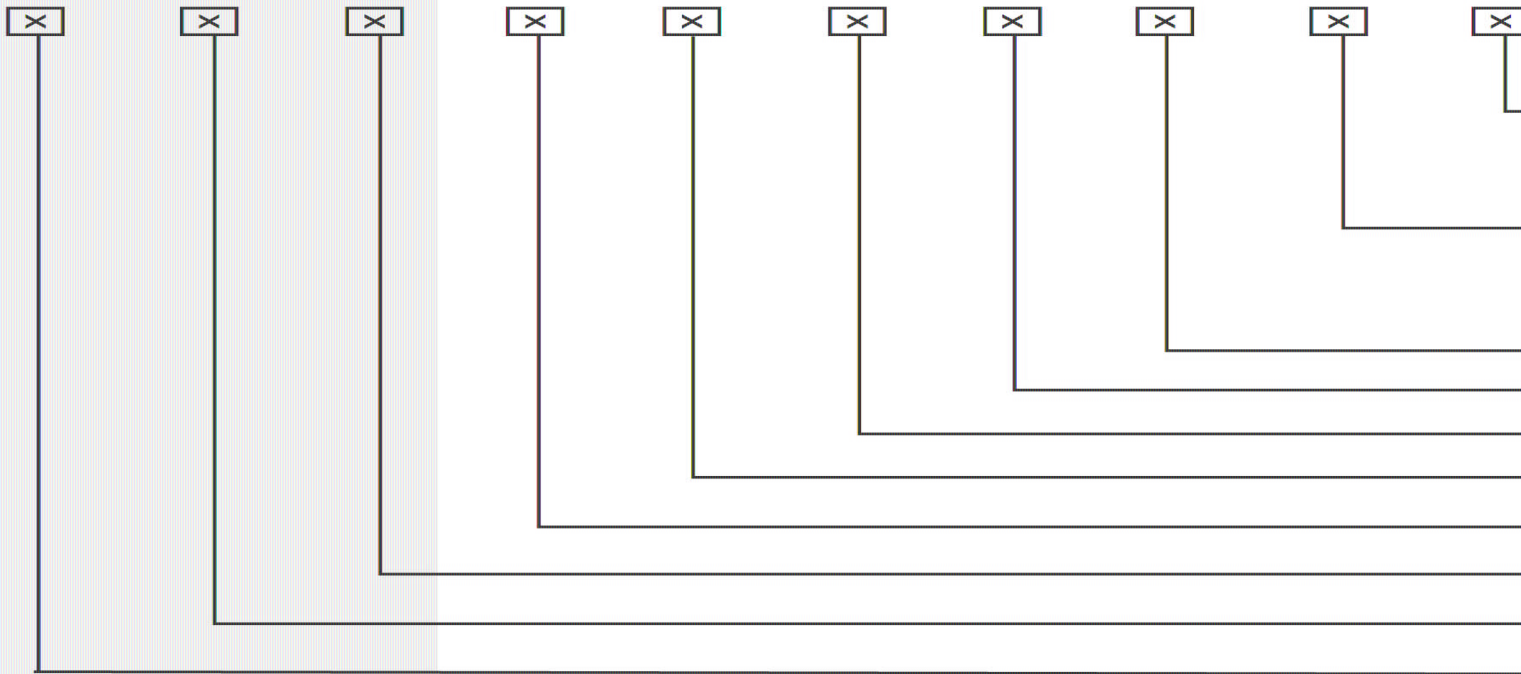


Hoist type	Capacity, kg	Hook travel, m									
		7				10					
		R1	R2	R3	R4	R1	R2	R3	R4	R1	R2
1	2	3	4	5	6	7	8	9	10	11	12
MT305	2000	814	740	420	400	881	803	363	347	934	814
MT308	3200	1237	1137	618	586	1345	1239	520	494	1424	1314
MT312	5000	1901	1721	980	910	2086	1892	811	755	2209	2086
MT316	6300	2361	2143	1205	1115	2593	2357	988	918	2748	2593
MT525	10000	3664	3316	1921	1769	4034	3656	1571	1449	4275	3921
M740	16000	4633	5193	3533	3984	4948	5552	3242	3648	5492	6148

The reactions are for upper end position of the hook and speed NA.

*The strongly developed engineering department gives as the opportunity to enter the standard product range in the wire rope hoist market. A comprehensive in house engineering capabilities meet every customer need for components and overall solutions in the*

# STANDARD HOISTS CATALOGUE



T - Traveling speed (value), m/min

Hoisting mechanism only

N - Monorail trolley – standard headroom

K - Monorail trolley – low headroom

D - Double rail trolley

E - Electric trolley

R - Hand geared trolley

S - Push travel trolley

M - Microlift

1 - Rope falls

2 - Lifting speed (V1, V2), m/min

3 - Hook travel (H and value), m

4 - Drum hoisting force, kN

Size

Type - Electric hoist M/MT

50 - Load limiter and emergency stop

51 - Load limiter, emergency stop and thermal protection

52 - Load limiter, emergency stop and thermal protection

53 - Load limiter, emergency stop, thermal protection and

## SELECTION EXAMPLE

## 52 MT525 H7 V1-4/1 M E N 20/5

- 52 - load limiter, emergency stop and thermal protection
- MT - hoist type
- 525 - type group 525, size 500, drum hoisting force 25 kN
- H7 - hook travel 7 m
- V1 - lifting speed V1-4/1 m/min
- 4/1 - rope falls 4/1
- M - two lifting speeds
- E - with electric trolley
- N - monorail trolley for standard headroom
- 20/5 - travel speed 20/5 m/min

*In addition to the standard product list Podemcrane offers advanced engineering for different industry areas.*



## SELECTION CRITERIA

When choosing the proper hoist take into account the following considerations:

- 1.The maximum load (capacity);
- 2.The maximum hook travel;
- 3.The lifting speed needed (optional micro speed);
- 4.The trolley speed needed;
- 5.The operating conditions.

The general hoist model is defined in accordance with the load spectrum, the average daily operating time, the capacity and the reeving.

SELECTION EXAMPLE	
Capacity	6300 kg
Hook travel (H)	7 m
Lifting speed (V)	6 m/min
Reeving	4/1
Load spectrum	medium
Cycles per hour (N)	10
Daily working time (T)	8 hours

The average daily operating time is determined by the equation:

$$T_m = \frac{2 \cdot H \cdot N \cdot T}{60 \cdot V} = \frac{2 \cdot 7 \cdot 10 \cdot 8}{60 \cdot 6} = 3.1 \text{ h,}$$

To the “medium” load spectrum and 3,1 average daily operating time the 2m (M5) duty mode corresponds as shown in the Load Spectrum/ Duty Mode Table.

Basing on the given values of capacity – 6 300 kg and reeving – 4/1, the Type Selection Table exhibits the MT 316 hoist models group.

Load Spectrum (Operation Mode)		
<b>Light</b>	Mechanisms, usually subject to very light loads and in exceptional cases only to maximum loads	
<b>Medium</b>	Mechanisms, usually subject to light loads but more often to maximum loads	
<b>Heavy</b>	Mechanisms, usually subject to medium loads but rather often to maximum loads	
<b>Very Heavy</b>	Mechanisms usually subject to maximum or almost maximum loads	
<b>Duty Mode</b>	<b>FEM 9.511 / DIN 15 020</b>	
	<b>ISO 4301</b>	

Selection of		
Rope falls		Size
2/1	4/1	
Capacity, kg		
800	1600	
1000	2000	MT300
1250	2500	
1600	3200	MT300
2000	4000	
2500	5000	MT300
3200	6300	MT300
4000	8000	
5000	10000	MT500
6300	12500	
8000	16000	M700
10000	20000	
12500	25000	M900
-	32000	
20000	40000	
25000	50000	M1000



**PODEMCRANE**

Distributed by:

